

# debbie fortune

ESTATE AGENTS

## Roper's Lane, Wrington

£1,100,000

🛏 6 🚗 3 🛋 2

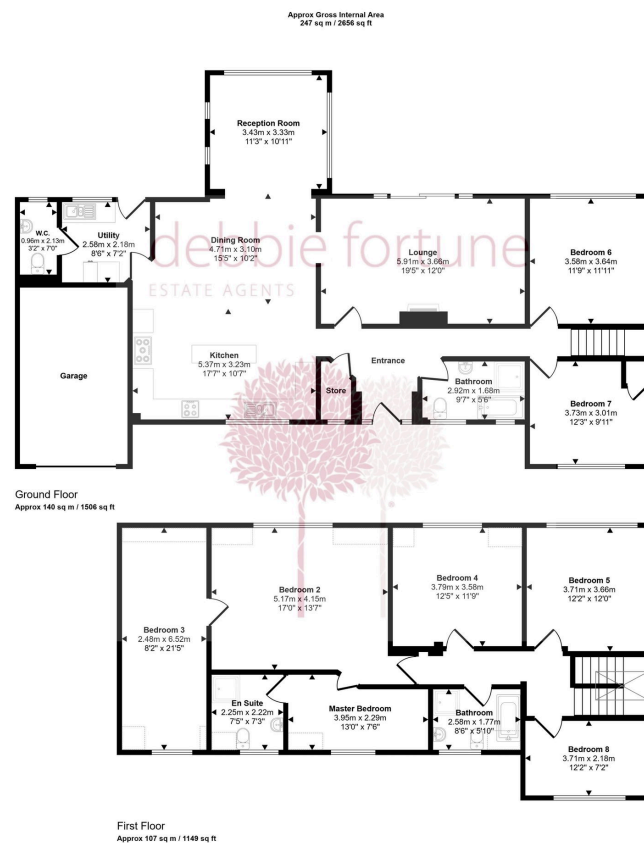


**ONE OF WRINGTONS MOST DESIREABLE ADDRESSES - CLICK HERE FOR VIRTUAL TOUR- A striking individual, six bedroomed family home, off desirable Ropers Lane, wonderful south facing garden with far reaching views to the Mendip Hills in the pretty village of Wrington. EPC rating D.**



## Key Features

- A substantial detached family home set on one of Wroughton's most desirable roads
- Two well-appointed bathrooms plus luxurious en-suite
- Separate south facing living room with sliding doors to a stunning sun terrace
- Generous south facing garden with far reaching views to the Mendip Hills
- Super-fast broadband and wireless home alarm
- Versatile accommodation with as many as five/six bedrooms
- Superb open plan kitchen/dining/family room with stunning Aga and beautiful views
- Master bedroom with dressing room, en-suite and gym room.
- Integrated garage and ample off-street parking
- EPC rating D, Council Tax band G



This floorplan is only for illustrative purposes and is not to scale. Measurements of rooms, doors, windows, and any items are approximate and no responsibility is taken for any error, omission or mis-statement. Icons of items such as bathroom scales are representations only and may not look like the real items. Made with Made Snappy 360.

